

Client: TruForm Compounds
 bradley@truformcompounds.com

 Sample received: **02/17/26**
 Analysis conducted: **02/17/26**

Compound:	Retatrutide	CAS:	2381089-83-2
Batch/Lot #:	R0251107	Formula:	C221H342N46O68
Appearance:	White lyophilized powder	Mol Wt:	4845.444 g/mol

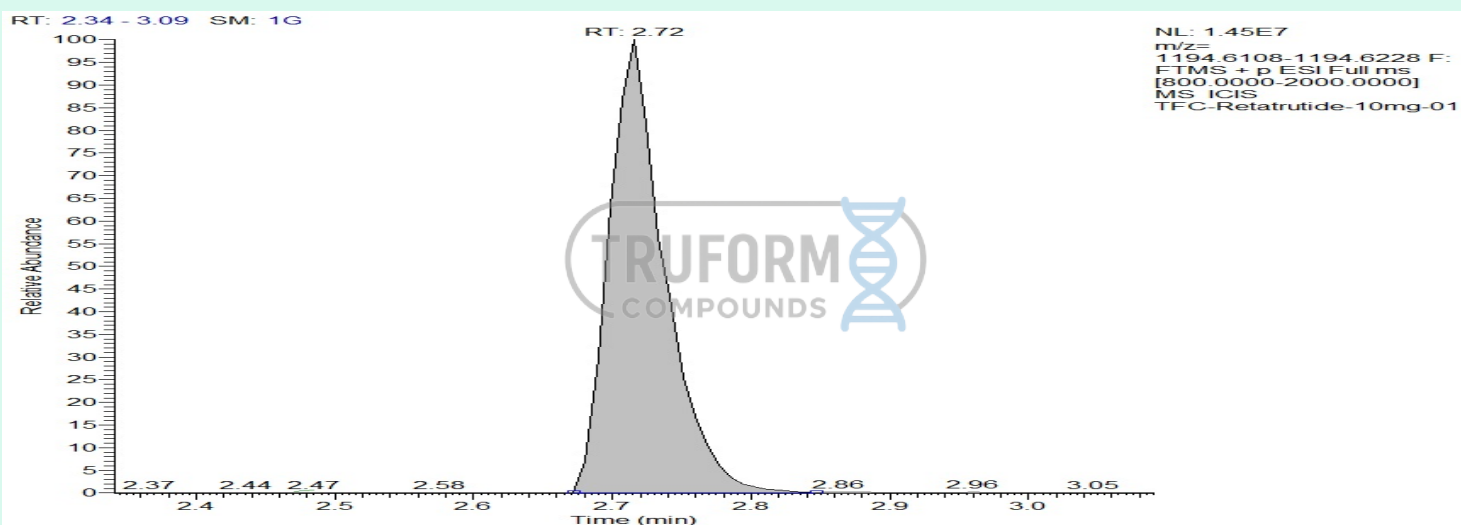
Method: Qualitative and Quantitative chemical analysis by Ultra High Performance Liquid Chromatography with Mass Spectrometry

Pubchem CID: 171390338

Retatrutide | C221H342N46O68 | Pubchem CID 171390338

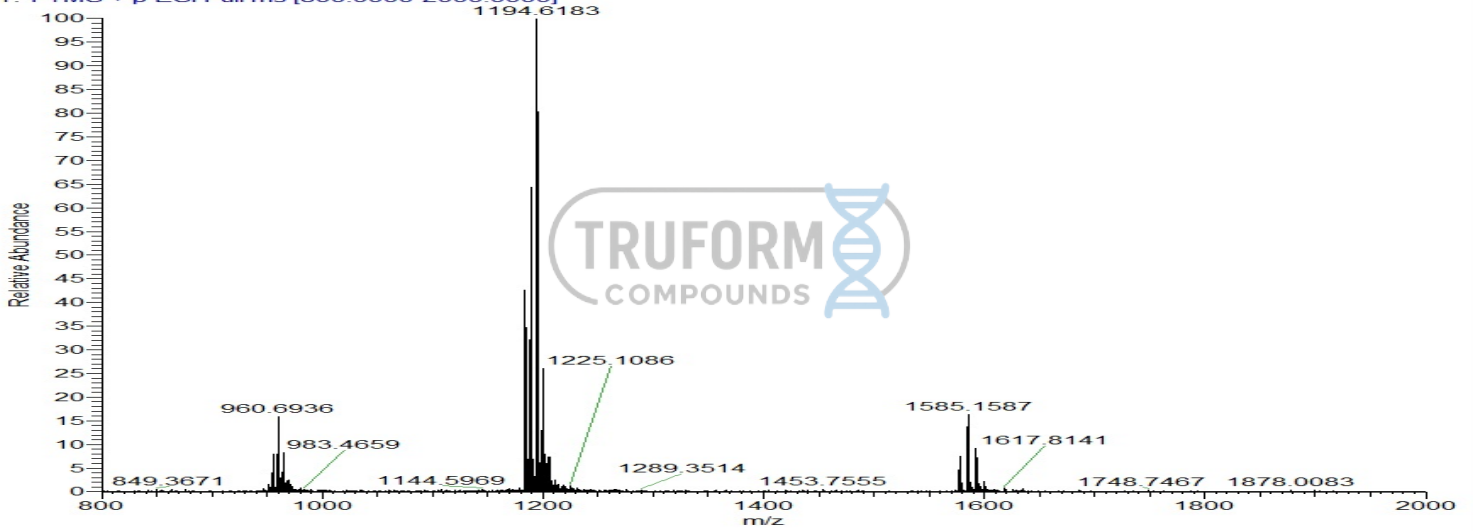
	Specification	Result	
Identity Test:	Retatrutide	Retatrutide	Conforms
Purity:	>99%	99.61%	Conforms

LC-MS Chromatogram: Retention Time and Peak Analysis

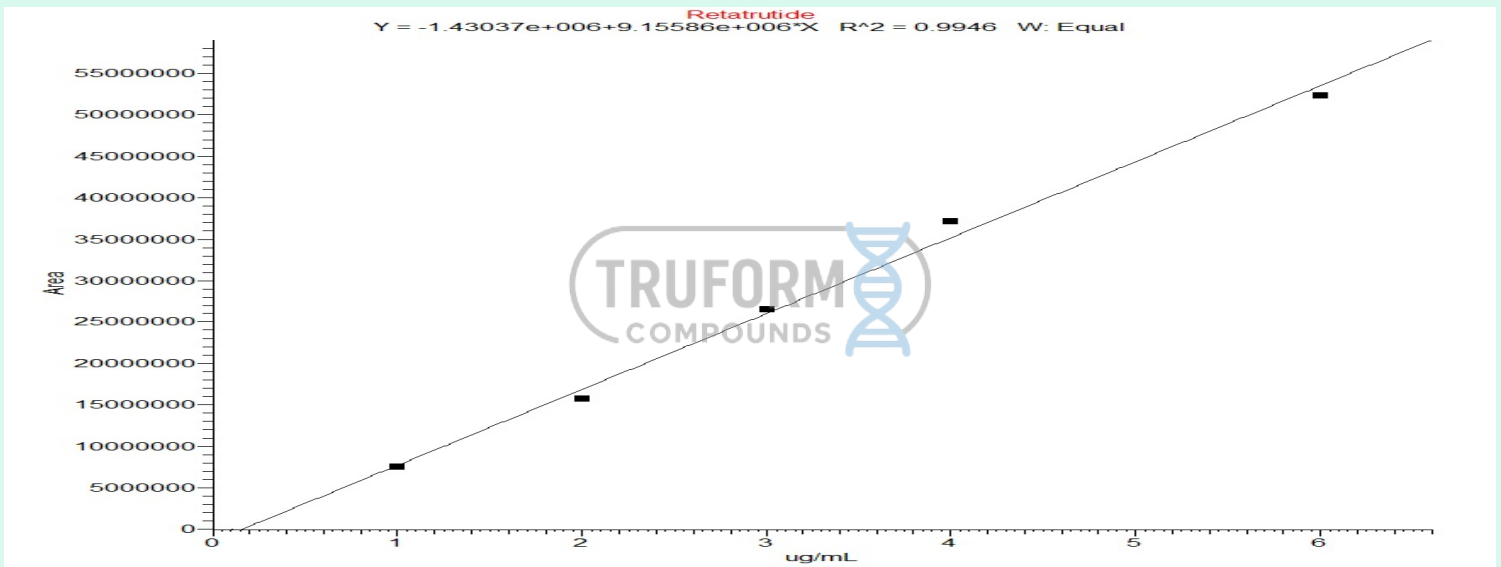


Full Scan Mass Spectrometry Analysis

TFC-Retatrutide-10mg-01 #312 RT: 2.72 AV: 1 NL: 1.42E7
T: FTMS + p ESI Full ms [800.0000-2000.0000]



Calibration Curve



Analysis Performed by
Dr. Victor Ugur
Analytical Chemist
contact@bioregen.com

COA #12233
Security Key **TRUFORMC**
bioregen.com/verify



Victor Ugur