

**Client: TruForm Compounds**  
bradley@truformcompounds.com

Sample received: **04/17/26**  
Analysis conducted: **05/28/26**

<b>Compound:</b>	BPC/TB/KPV Blend	<b>CAS:</b>	137525-51-0
<b>Batch/Lot #:</b>	BTK0260304	<b>Formula:</b>	C62H98N16O22
<b>Appearance:</b>	White lyophilized powder	<b>Mol Wt:</b>	1419.5 g/mol

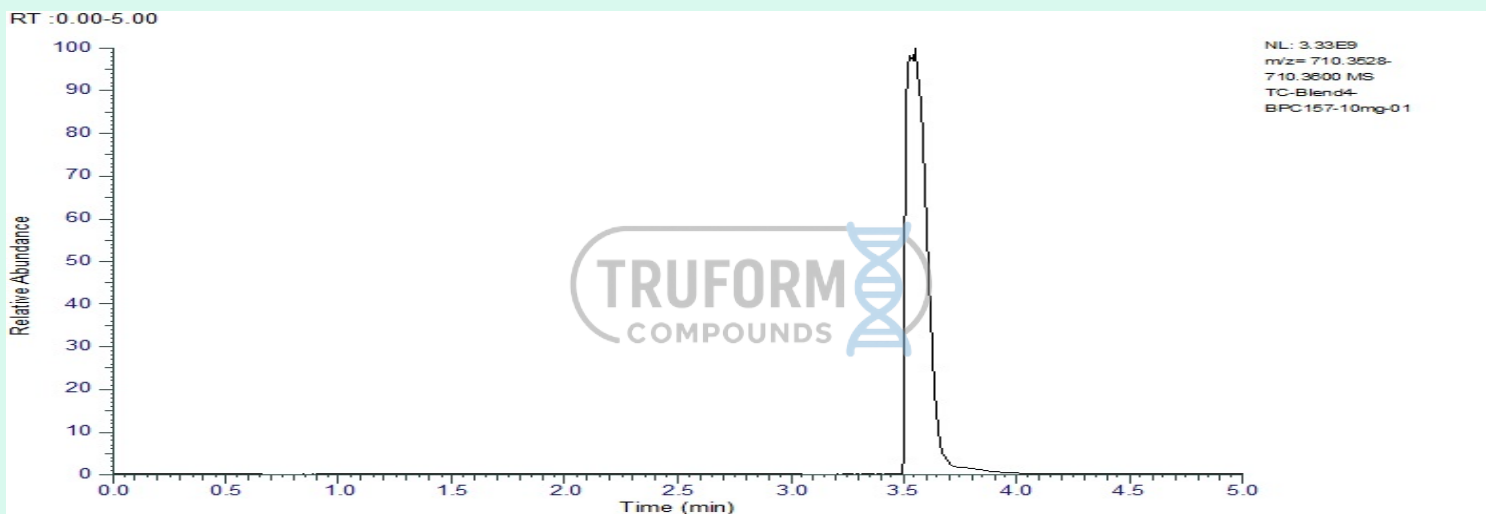
**Method:** Qualitative and Quantitative chemical analysis by Ultra High Performance Liquid Chromatography with Mass Spectrometry

**Pubchem CID:** 9941957

[BPC 157](#) | [C62H98N16O22](#) | [CID 9941957 - PubChem](#)

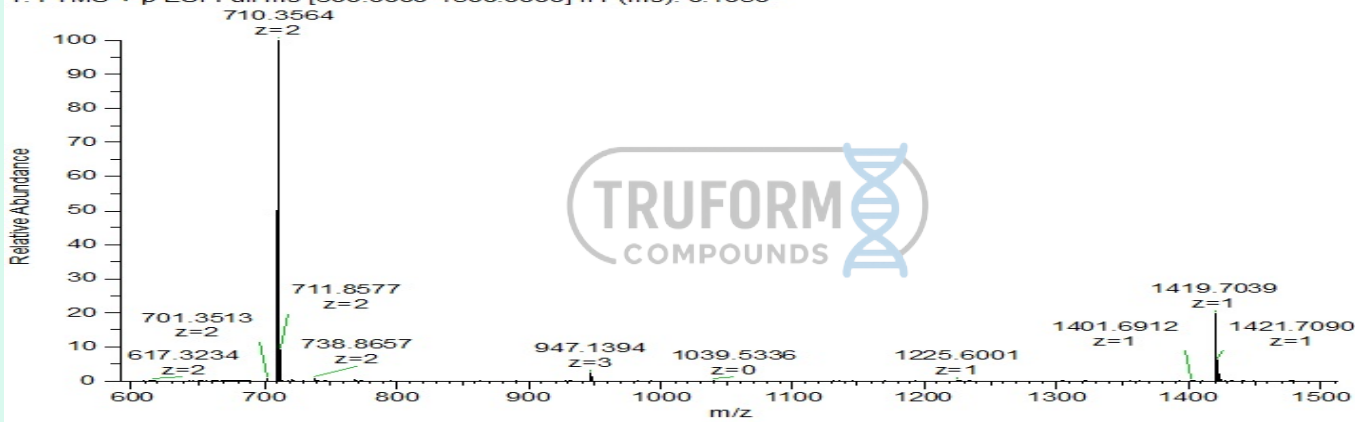
	Specification	Result	
<b>Identity Test:</b>	BPC 157	<b>BPC 157</b>	<b>Conforms</b>
<b>Purity:</b>	>99%	<b>99.63%</b>	<b>Conforms</b>

### LC-MS Chromatogram: Retention Time and Peak Analysis



# Full Scan Mass Spectrometry Analysis

TC-Blend4-BPC157-10mg-01 #408 RT: 3.55 AV: 1 NL: 3.28E9  
T: FTMS + p ESI Full ms [600.0000-1500.0000] IIT (ms): 0.1050



## Analysis Performed by

Dr. Roberto Marin  
Analytical Chemist  
contact@bioregen.com

COA #13024  
Security Key **TRUFORMC**  
bioregen.com/verify



**Client: TruForm Compounds**  
 bradley@truformcompounds.com

 Sample received: **04/17/26**  
 Analysis conducted: **05/28/26**

<b>Compound:</b>	BPC/TB/KPV Blend	<b>CAS:</b>	885340-08-9
<b>Batch/Lot #:</b>	BTK0260304	<b>Formula:</b>	C38H68N10O14
<b>Appearance:</b>	White lyophilized powder	<b>Mol Wt:</b>	889.0 g/mol

**Method:** Qualitative and Quantitative chemical analysis by Ultra High Performance Liquid Chromatography with Mass Spectrometry

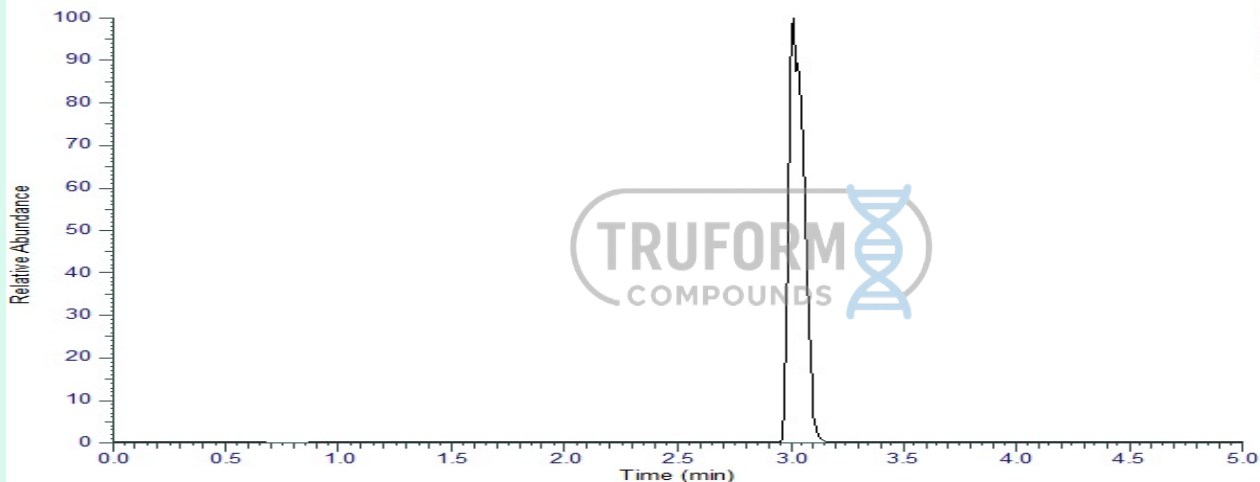
**Pubchem CID:** 62707662

TB 500|C38H68N10O14 | CID 62707662

	Specification	Result	
<b>Identity Test:</b>	TB500	<b>TB500</b>	<b>Conforms</b>
<b>Purity:</b>	>99%	<b>99.59%</b>	<b>Conforms</b>

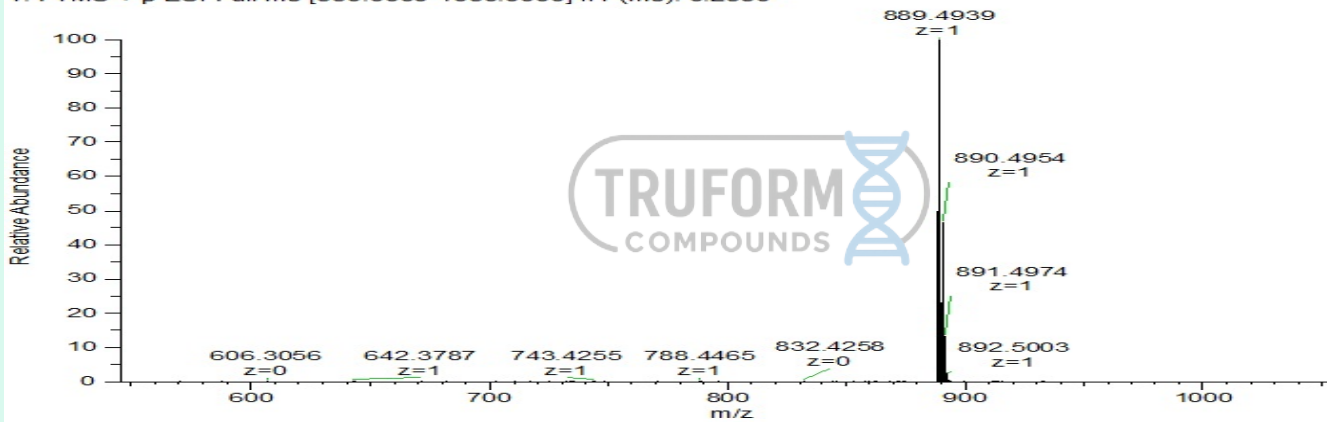
### LC-MS Chromatogram: Retention Time and Peak Analysis

RT : 0.00-5.00



# Full Scan Mass Spectrometry Analysis

TC-Blend4-TB500-10mg-01 #345 RT: 3.01 AV: 1 NL: 2.08E9  
T: FTMS + p ESI Full ms [550.0000-1050.0000] IIT (ms): 0.2590



## Analysis Performed by

Dr. Roberto Marin  
Analytical Chemist  
contact@bioregen.com

*Roberto Marin*

COA #13024  
Security Key **TRUFORMC**  
bioregen.com/verify



**Client: TruForm Compounds**  
bradley@truformcompounds.com

Sample received: **04/17/26**  
Analysis conducted: **05/28/26**

Compound:	BPC/TB/KPV Blend	CAS:	67727-97-3
Batch/Lot #:	BTK0260304	Formula:	C16H30N4O4
Appearance:	White lyophilized powder	Mol Wt:	342.43 g/mol

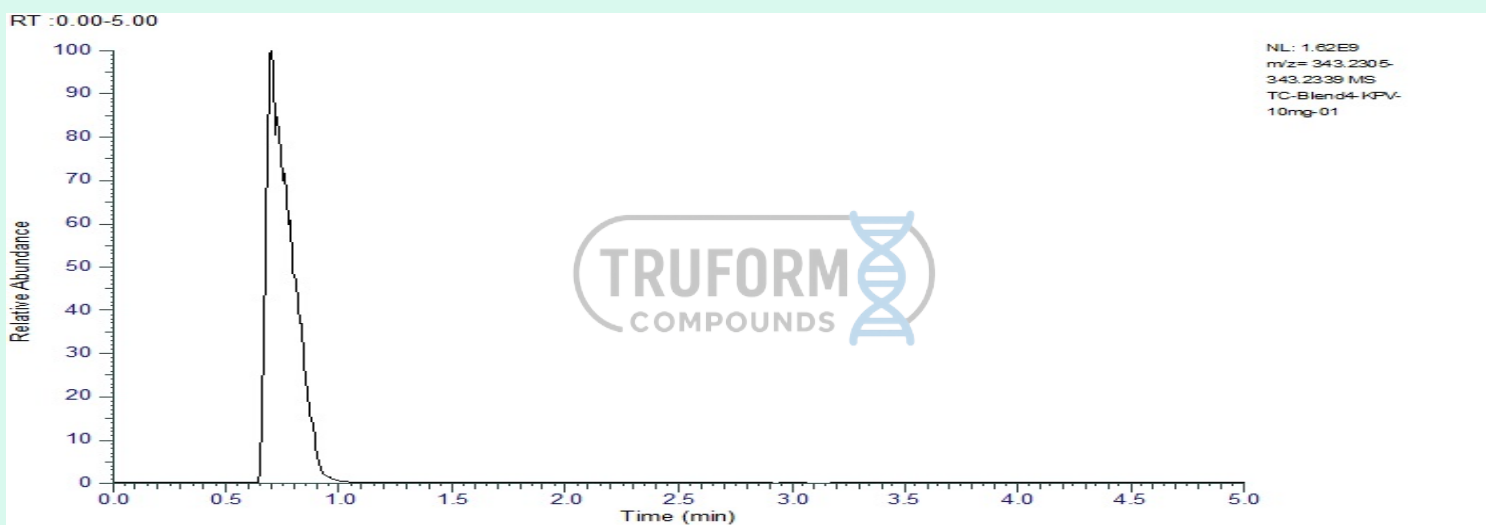
**Method:** Qualitative and Quantitative chemical analysis by Ultra High Performance Liquid Chromatography with Mass Spectrometry

**Pubchem CID:** 125672

[KPV | C16H30N4O4 | 125672 CID Pub Chem](#)

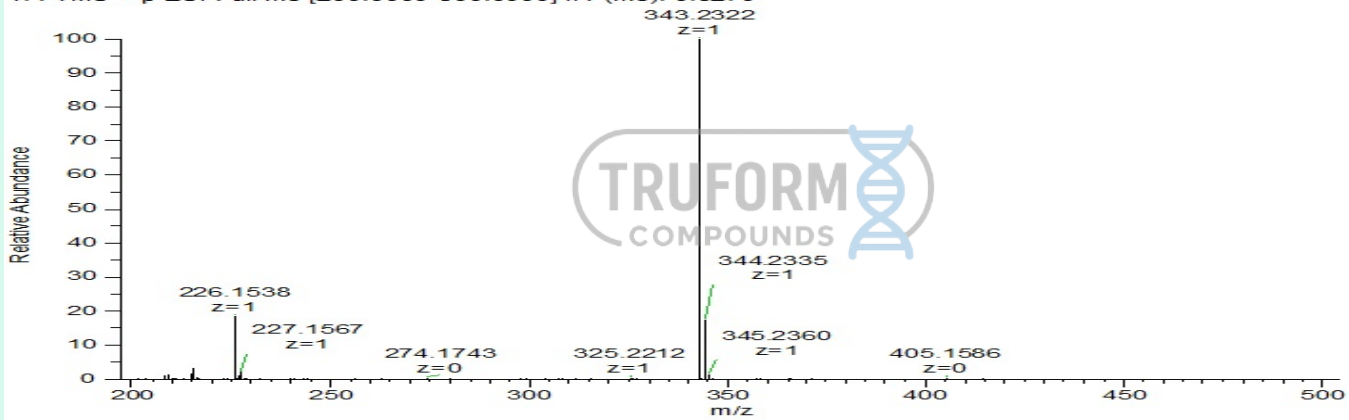
	Specification	Result	
Identity Test:	KPV	<b>KPV</b>	<b>Conforms</b>
Purity:	>99%	<b>99.72%</b>	<b>Conforms</b>

### LC-MS Chromatogram: Retention Time and Peak Analysis



# Full Scan Mass Spectrometry Analysis

TC-Blend4-KPV-10mg-01 #81 RT: 0.70 AV: 1 NL: 1.62E9  
T: FTMS + p ESI Full ms [200.0000-500.0000] IIT (ms): 0.3270



## Analysis Performed by

Dr. Roberto Marin  
Analytical Chemist  
contact@bioregen.com

*Roberto Marin*

COA #13024  
Security Key **TRUFORMC**  
bioregen.com/verify

